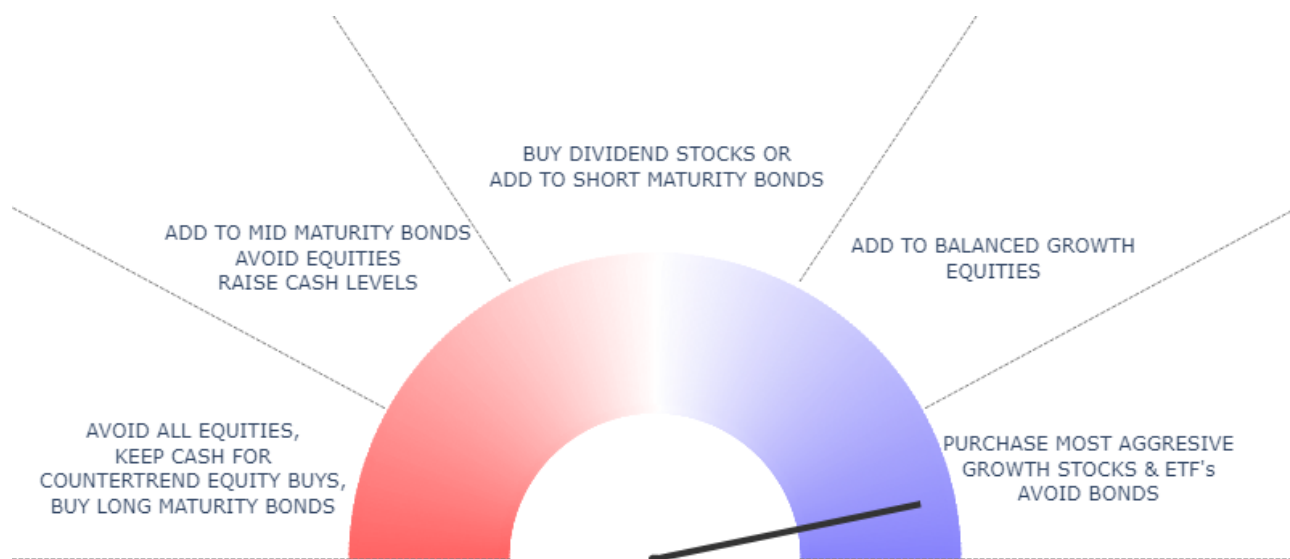


Riskdials Score Changes: Positive



Model Score: 87.0

Daily Change: 2.0

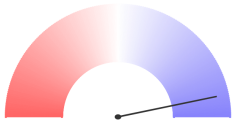
Stance: Risk-On

Last Investment: SPY, 410.93, 2023-04-14

Updated:2023-09-05 12:55

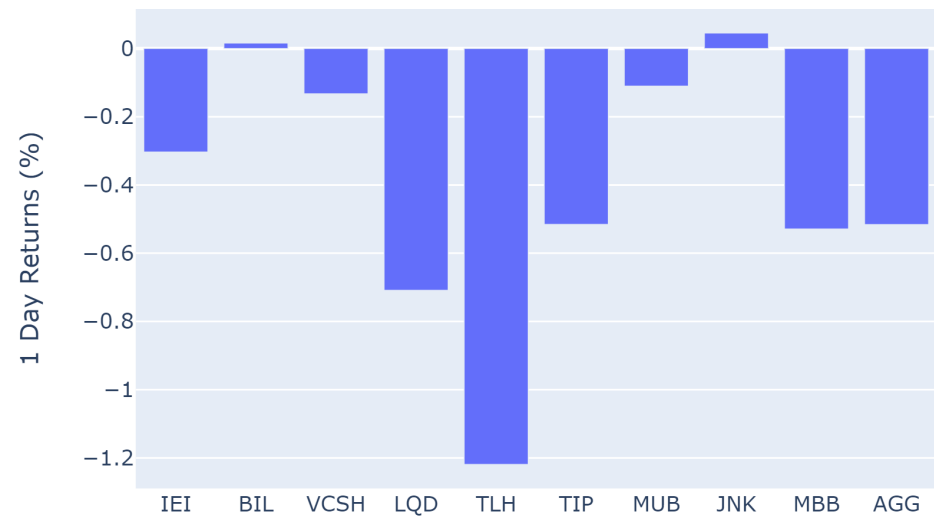
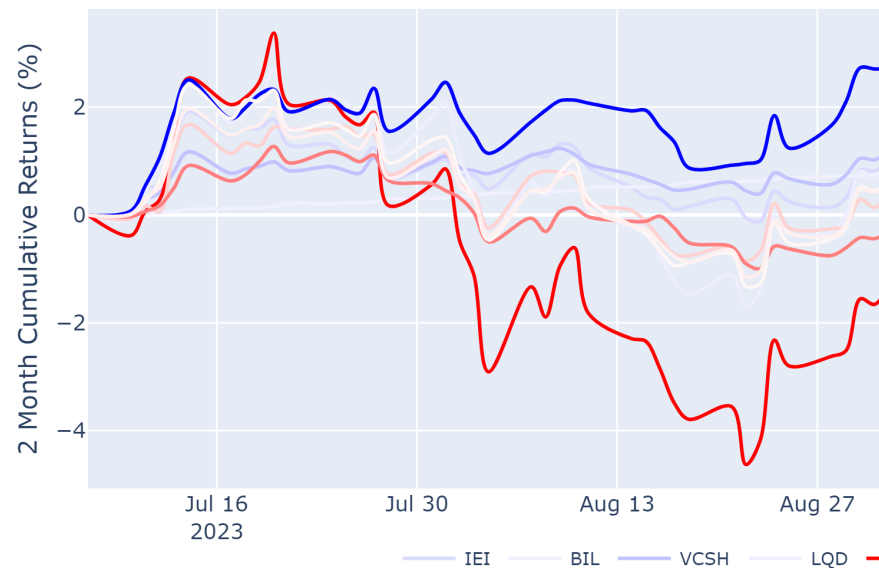
September 05, 2023

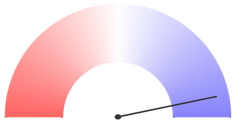
[Learn how to use this report](#)



Bonds

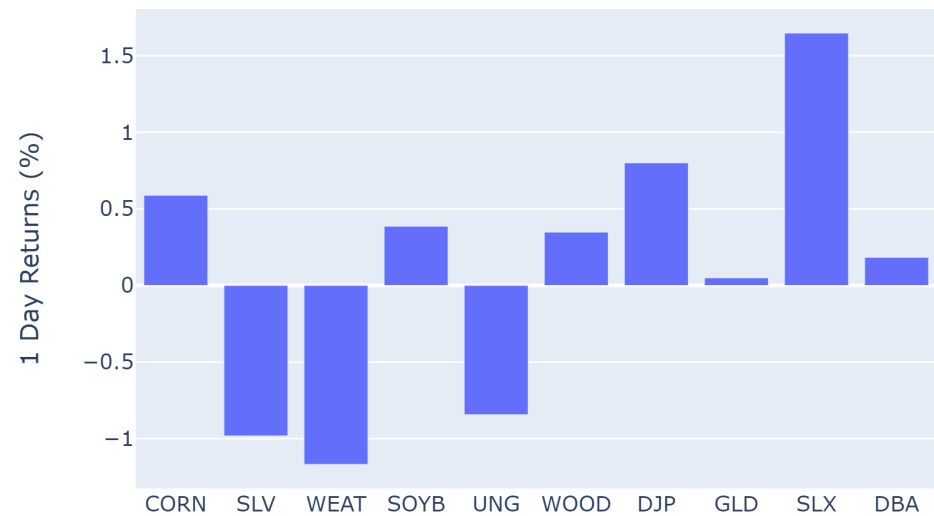
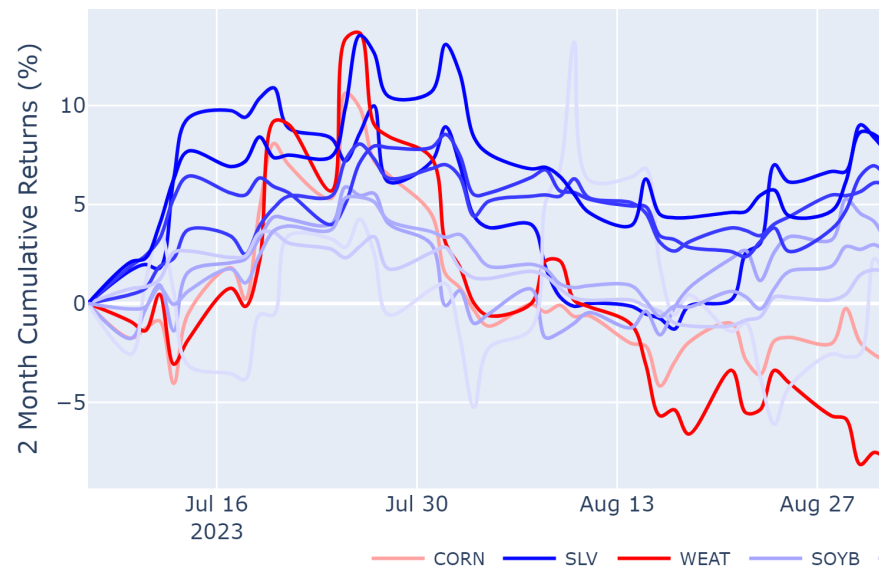
Ticker	Company	Semaphore	Semaphore Change	Brake	Brake Change
AGG	iShares Core U.S. Aggregate Bond ETF	-27	0	25	0
JNK	SPDR Bloomberg High Yield Bond ETF	15	0	25	0
VCSH	Vanguard Short-Term Corporate Bond ETF	3	0	25	0
TLH	iShares 10-20 Year Treasury Bond ETF	-27	0	25	25
TIP	iShares TIPS Bond ETF	-64	0	25	0
MUB	iShares National Muni Bond ETF	-27	0	25	0
MBB	iShares MBS ETF	-27	0	25	0
BIL	SPDR Bloomberg 1-3 Month T-Bill ETF	100	0	-50	0
LQD	iShares iBoxx USD Investment Grade Corporate Bond ETF	-27	0	25	0
IEI	iShares 3-7 Year Treasury Bond ETF	-27	0	25	0

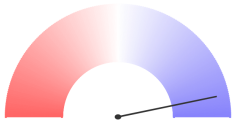




Commodities

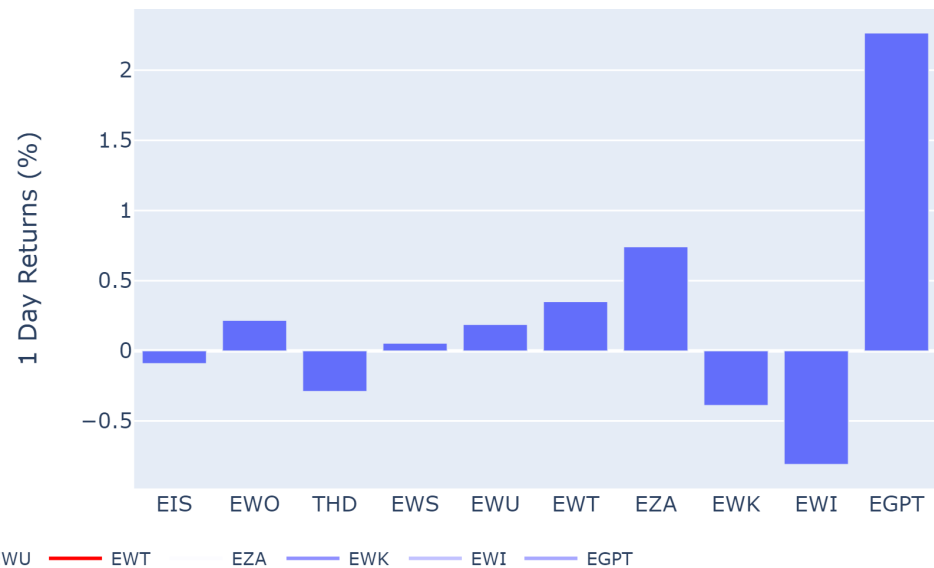
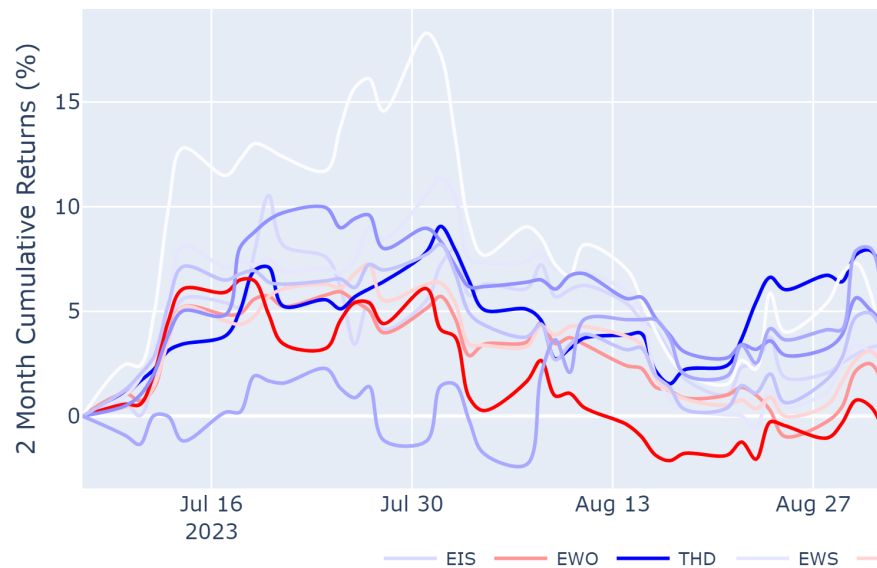
Ticker	Company	Semaphore	Semaphore Change	Brake	Brake Change
SLV	iShares Silver Trust	27	55	0	0
CORN	Teucrium Corn Fund	-100	0	0	0
DBA	Invesco DB Agriculture Fund	-21	0	0	0
DJP	Barclays Bank PLC	-64	0	0	0
GLD	SPDR Gold Shares ETF	-27	0	0	-25
SLX	VanEck Steel ETF	15	0	0	0
SOYB	Teucrium Soybean Fund	39	0	0	0
UNG	United States Natural Gas Fund	-88	0	0	0
WEAT	Teucrium Wheat Fund	-100	0	0	0
WOOD	ISHARES GLOBAL TIMBER & FORESTRY ETF	-52	0	25	0

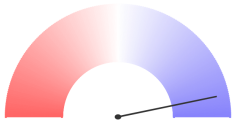




Countries

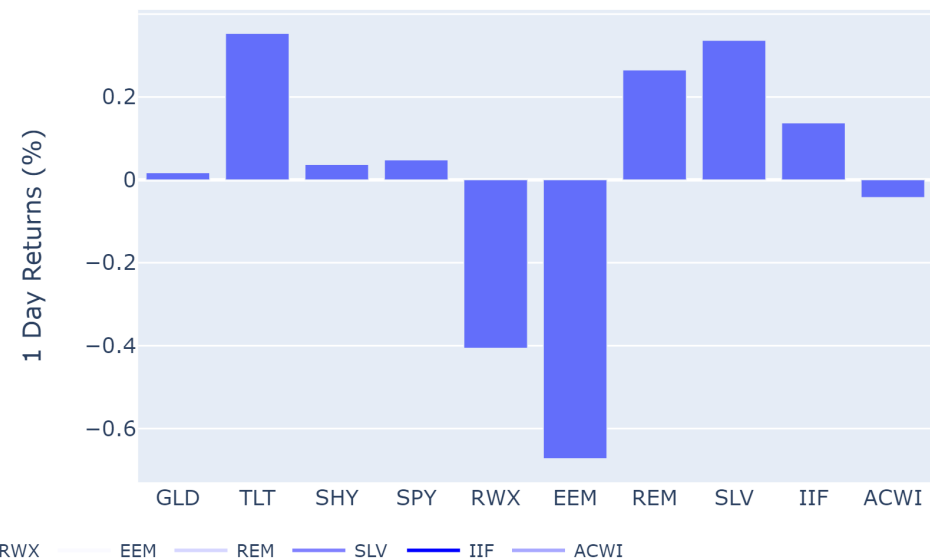
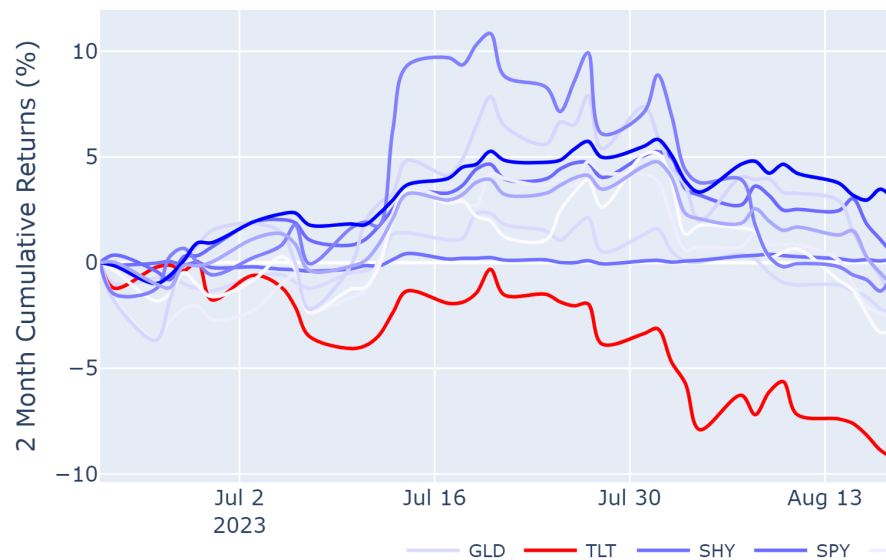
Ticker	Company	Semaphore	Semaphore Change	Brake	Brake Change
EWK	iShares MSCI Belgium ETF	3	30	0	-25
THD	iShares MSCI Thailand ETF	-39	24	0	0
EGPT	VanEck Egypt Index ETF	100	24	0	0
EWO	iShares MSCI Austria ETF	15	12	0	-25
EIS	iShares MSCI Israel ETF	-88	12	0	-50
EWI	iShares MSCI Italy ETF	15	12	0	-25
EZA	iShares MSCI South Africa ETF	-64	0	0	0
EWS	iShares MSCI Singapore ETF	-27	0	-25	-25
EWT	iShares MSCI Taiwan ETF	3	0	0	0
EWU	iShares MSCI United Kingdom ETF	-27	0	0	-25

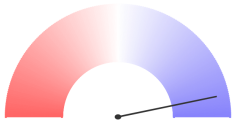




Cross Asset Class

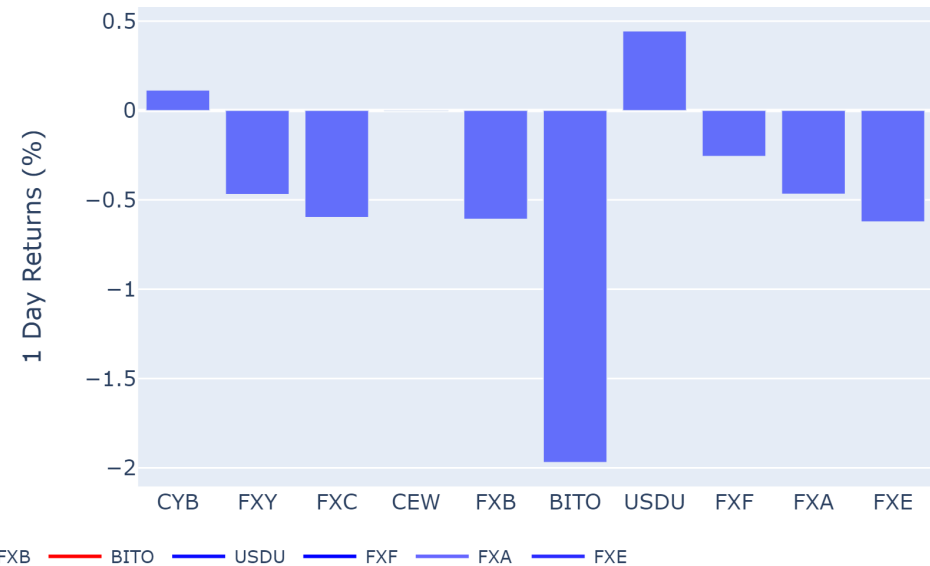
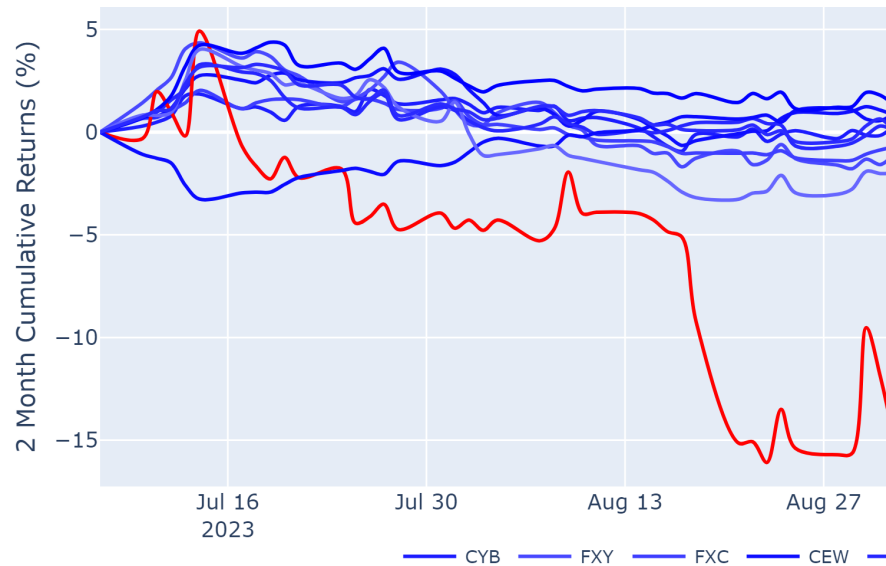
Ticker	Company	Semaphore	Semaphore Change	Brake	Brake Change
TLT	iShares 20+ Year Treasury Bond ETF	3	42	50	0
GLD	SPDR Gold Shares ETF	76	24	50	0
ACWI	iShares MSCI ACWI ETF	100	0	30	-20
EEM	iShares MSCI Emerging Markets ETF	100	0	50	0
SPY	SPDR S&P 500 ETF Trust	100	0	30	-10
SLV	iShares Silver Trust	76	0	50	0
SHY	iShares 1-3 Year Treasury Bond ETF	52	0	60	0
RWX	SPDR Dow Jones International Real Estate ETF	39	0	50	0
REM	iShares Mortgage Real Estate ETF	39	0	40	-10
IIF	Morgan Stanley India Investment Fund Inc	39	0	30	0

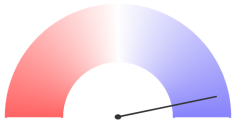




Currencies

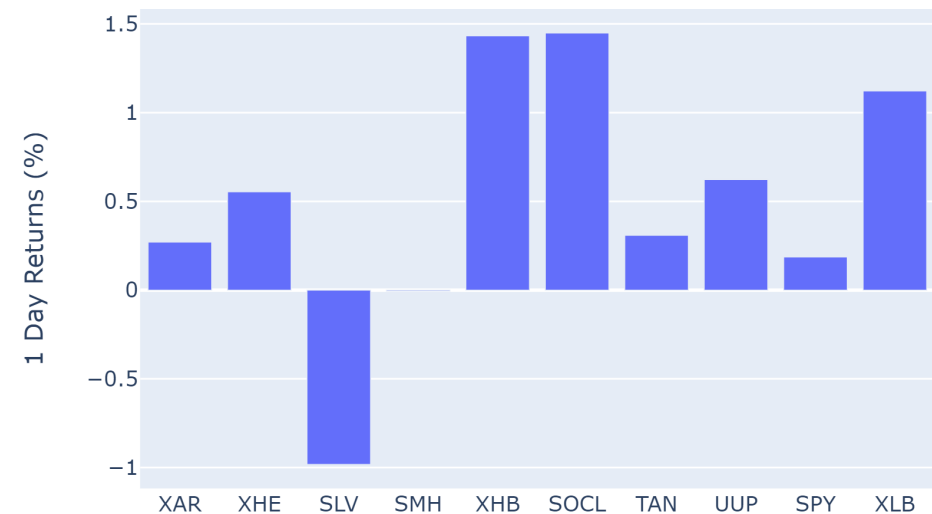
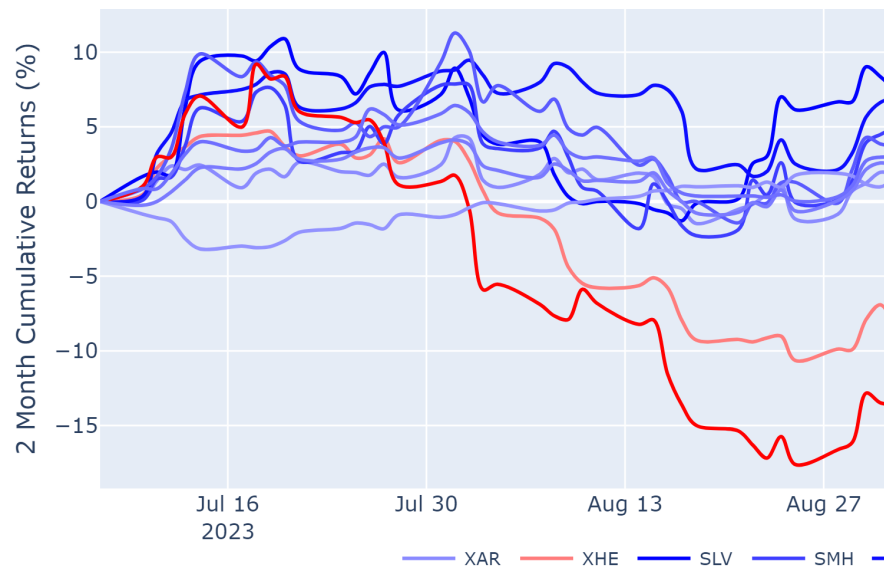
Ticker	Company	Semaphore	Semaphore Change	Brake	Brake Change
FXF	Invesco CurrencyShares Swiss Franc Trust	39	24	25	0
FXE	Invesco CurrencyShares Euro Trust	15	12	25	0
BITO	ProShares Bitcoin Strategy ETF	3	0	25	0
CEW	WISDOMTREE EMERGING CURRENCY STRATEGY FUND N/A	3	0	0	0
CYB	WisdomTree Chinese Yuan Strategy Fund	-64	0	0	-25
FXA	Invesco CurrencyShares Australian Dollar Trust	-64	0	0	25
FXB	Invesco CurrencyShares British Pound Sterling Trust	64	0	0	0
FXC	Invesco CurrencyShares Canadian Dollar Trust	3	0	0	0
FXY	Invesco CurrencyShares Japanese Yen Trust	-27	0	0	0
USDU	WisdomTree Bloomberg U.S. Dollar Bullish Fund	3	0	0	0

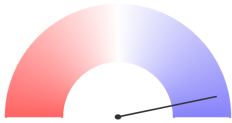




Industry Sectors

Ticker	Company	Semaphore	Semaphore Change	Brake	Brake Change
SLV	iShares Silver Trust	27	55	0	0
SMH	VanEck Semiconductor ETF	39	24	0	0
XLB	Materials Select Sector SPDR	-21	0	0	-25
SOCL	Global X Social Media ETF	3	0	0	-25
SPY	SPDR S&P 500 ETF Trust	15	0	0	-25
TAN	Invesco Solar ETF	-100	0	50	0
UUP	Invesco DB US Dollar Index Bullish Fund	3	0	0	0
XAR	SPDR S&P Aerospace & Defense ETF	15	0	0	-25
XHB	SPDR Homebuilders ETF	15	0	50	0
XHE	SPDR S&P Health Care Equipment ETF	-100	0	50	0

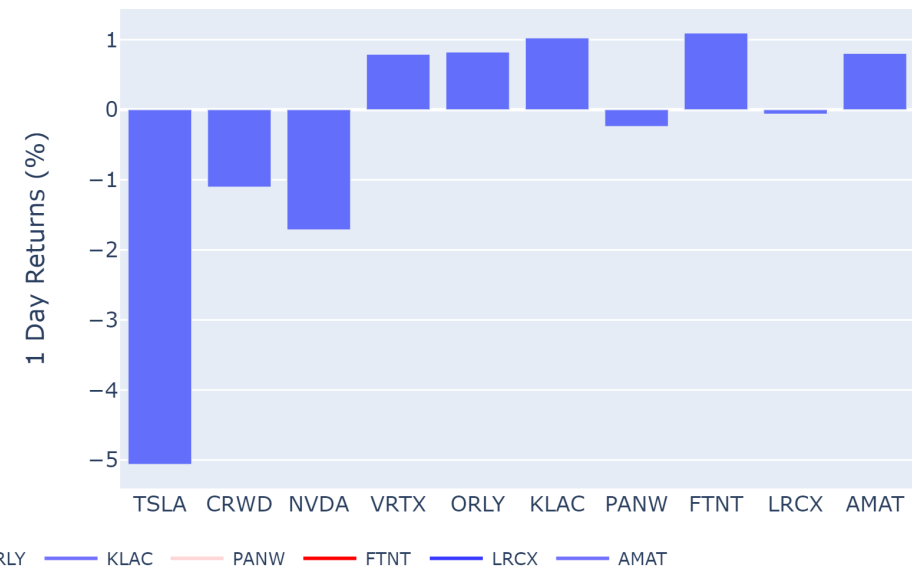
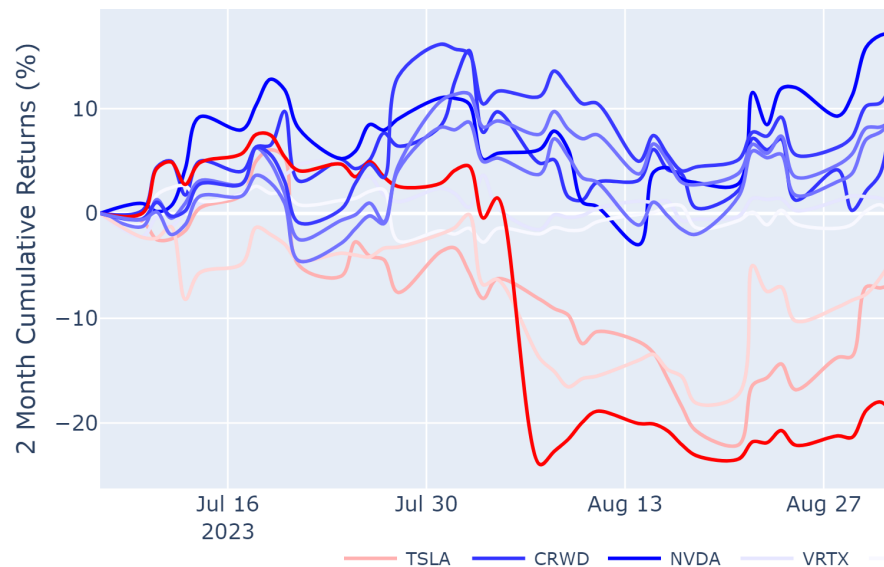


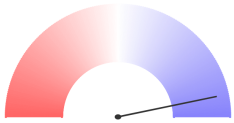


Riskdials Score Changes: Positive

Nasdaq 100

Ticker	Company	Semaphore	Semaphore Change	Brake	Brake Change
PANW	Palo Alto Networks Inc	76	73	0	0
ORLY	O`Reilly Automotive Inc	76	61	0	0
VRTX	Vertex Pharmaceuticals Inc	76	61	0	0
NVDA	NVIDIA Corp	76	61	0	0
CRWD	CrowdStrike Holdings Inc - Class A	3	61	0	0
TSLA	Tesla Inc	-21	48	0	-25
KLAC	KLA Corp	100	36	0	0
AMAT	Applied Materials Inc	100	36	0	0
FTNT	Fortinet Inc	-27	36	0	25
LRCX	Lam Research Corp	100	36	0	0

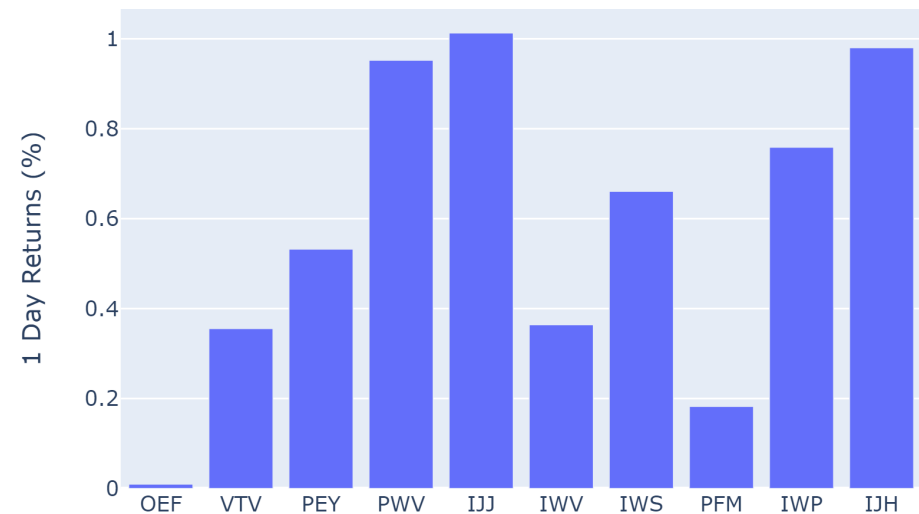
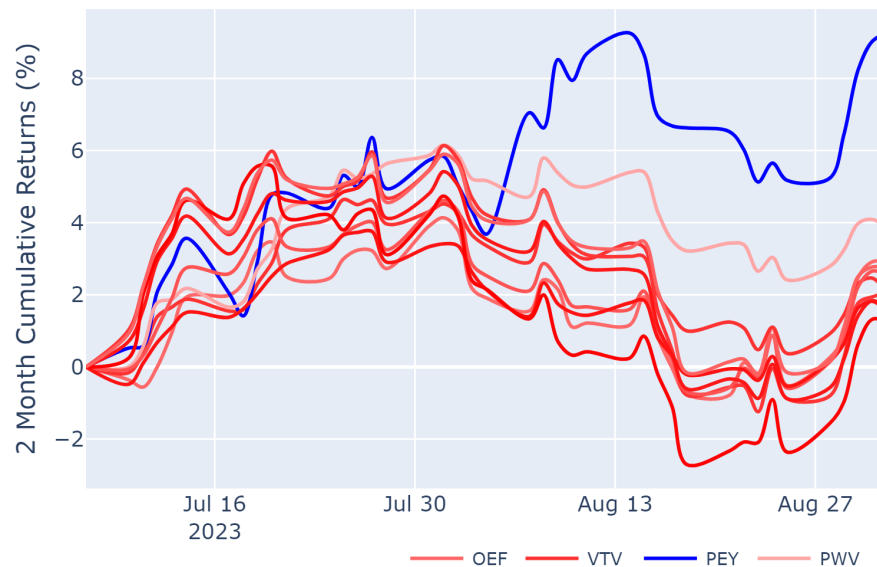


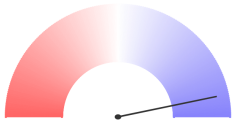


Riskdials Score Changes: Positive

Segments and Styles

Ticker	Company	Semaphore	Semaphore Change	Brake	Brake Change
IJH	iShares Core S&P Mid-Cap ETF	15	0	25	25
IJJ	iShares S&P Mid-Cap 400 Value ETF	-21	0	25	25
VTV	Vanguard Value ETF	-21	0	25	0
PWV	Invesco Dynamic Large Cap Value ETF	3	0	25	0
PFM	Invesco Dividend Achievers ETF	-21	0	25	0
PEY	Invesco High Yield Equity Dividend Achievers ETF	15	0	0	0
OEF	iShares S&P 100 ETF	15	0	0	-25
IWV	iShares Russell 3000 ETF	15	0	0	-25
IWS	iShares Russell Mid-Cap Value ETF	-21	0	25	0
IWP	iShares Russell Mid-Cap Growth ETF	3	0	0	-25

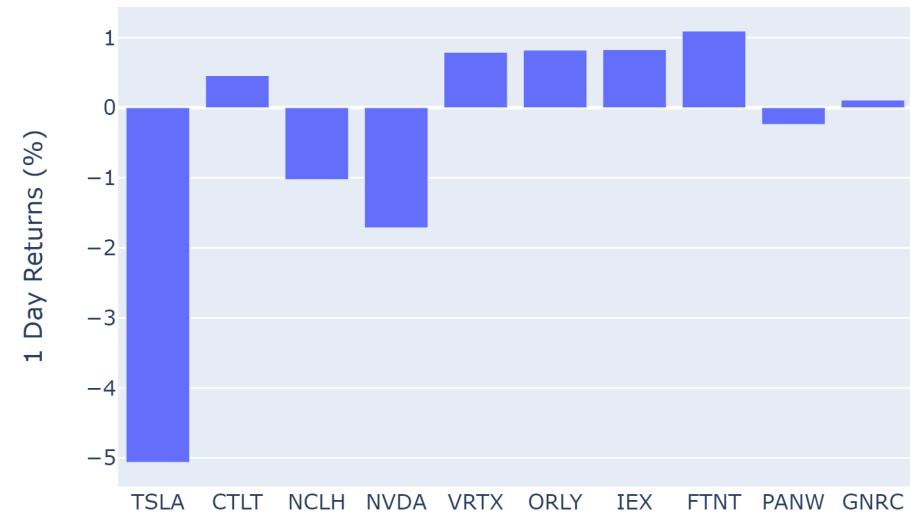
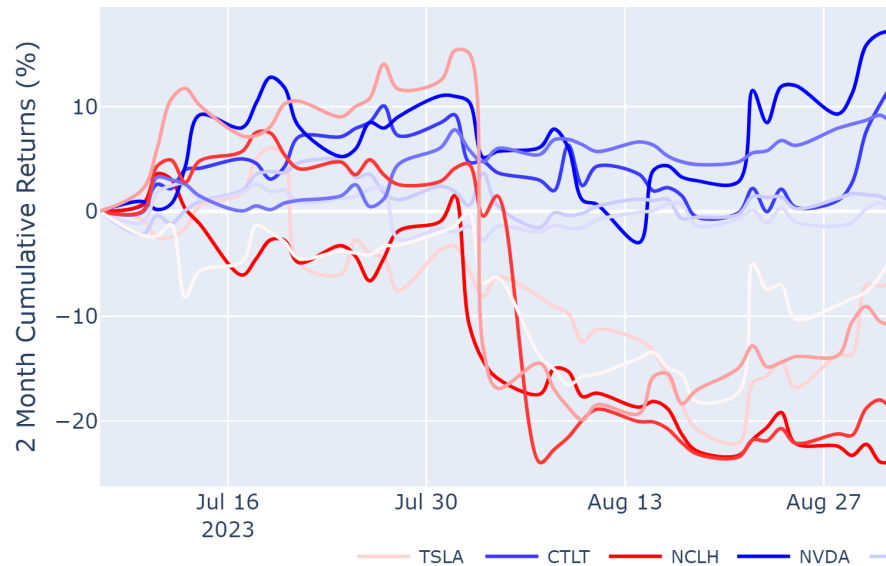


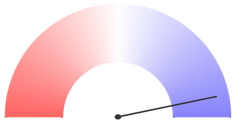


Riskdials Score Changes: Positive

S&P500

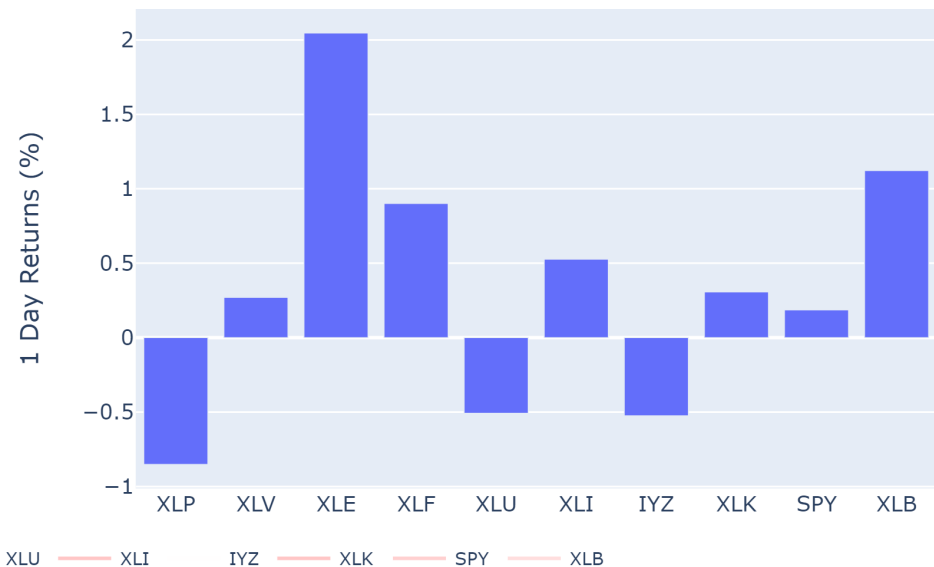
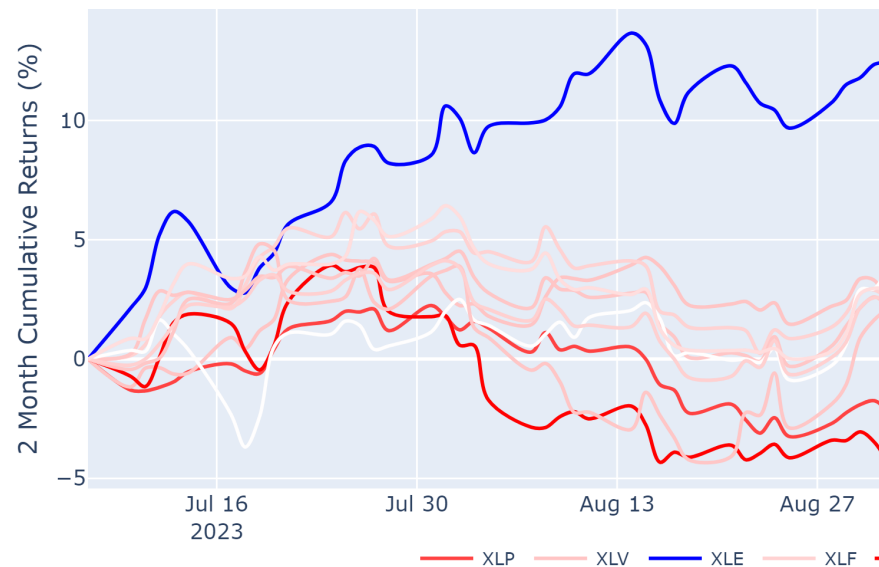
Ticker	Company	Semaphore	Semaphore Change	Brake	Brake Change
PANW	Palo Alto Networks Inc	76	73	0	0
GNRC	Generac Holdings Inc	-33	67	0	0
NVDA	NVIDIA Corp	76	61	0	0
VRTX	Vertex Pharmaceuticals Inc	76	61	0	0
ORLY	O`Reilly Automotive Inc	76	61	0	0
IEX	IDEX Corporation	3	55	0	0
TSLA	Tesla Inc	-21	48	0	-25
NCLH	Norwegian Cruise Line Holdings Ltd	15	48	0	0
CTLT	Catalent Inc	-64	36	0	0
FTNT	Fortinet Inc	-27	36	0	25

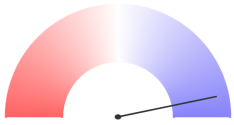




US Sectors

Ticker	Company	Semaphore	Semaphore Change	Brake	Brake Change
IYZ	iShares U.S. Telecommunications ETF	-88	0	25	0
SPY	SPDR S&P 500 ETF Trust	15	0	0	-25
XLB	Materials Select Sector SPDR	-21	0	0	-25
XLE	The Energy Select Sector SPDR Fund	39	0	0	0
XLF	Financial Select Sector SPDR	-21	0	25	0
XLI	Industrial Select Sector SPDR	15	0	25	25
XLK	Technology Select Sector SPDR ETF	15	0	0	0
XLP	Consumer Staples Select Sector SPDR	-64	0	25	0
XLU	Utilities Select Sector SPDR ETF	-100	0	0	0
XLV	Health Care Select Sector SPDR	27	0	0	-25





This report is for informational purposes only and should not be considered as investment advice. RiskDials is not liable for any decisions or actions based on the information provided in this report.

Appendix

The scores report highlights the top 10 changes in the trend score of a particular asset class. If you are viewing the "positive score changes" report, the report will show the tickers with the largest positive increases in trend and vice-versa. Each table shows 4 datapoints per ticker, the absolute score, the "Semaphore", the change in score, "Semaphore Change", the level of overbought or oversold as measured by the "Brake" and the change in the level of over bought or oversold, the "Brake Change". The tables help you quickly identify the most notable changes across asset classes for a given trading day.

The Semaphore score ranges from +100 to -100. +100 indicates are very strong upstrend, while -100 indicates a very strong downtrend. The Brake also ranges from +100 to -100. +100 indicates a very oversold condition while -100 indicates a very overbought condition.

Below each change table there are two performance summary charts which provide additional context for securities expressing large positive or negative trend changes on a given day. The first chart is a view of the 2-month cumulative returns of the securities in the particular book being viewed. The deepest blues will highlight the securities with the largest relative 3 month cumulative return to the other securities in the chart. Likewise, the deepest reds will highlight securities with the lowest relative returns. The second chart is simply the one-day performance in % return of each of the securities.

There are a few books with only about 10 securities in each book such as the Bonds, Currencies and US Sectors books. As such there will be overlap between the positive changes pdf and the negative changes PDF and all of the securities will be represented in each of the PDFs irrespective of changes on any given day.